

ADVANCED LASER SYSTEM FOR PATIENT ALIGNMENT



APOLLO red



APOLLO green



APOLLO blue



DESCRIPTION

Room lasers are necessary tools for aligning the patient, daily reference isocenter adjustments, and assuring optimized isocenter accuracy for linear accelerators.

Integrated in a superior aluminium housing our APOLLO room laser combines advanced optics, high precision mechanics and state of the art electronics to ensure the highest level of stability and reliability.

SCOPE OF DELIVERY

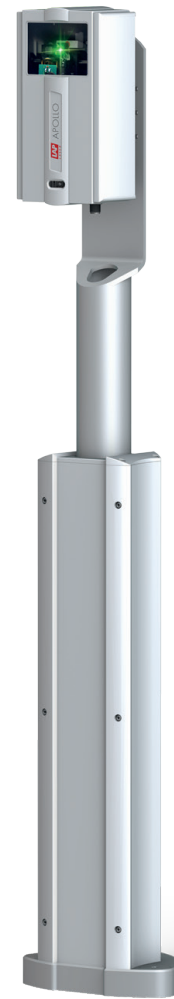
- Roomlaser as configured
- Adjustable tilting brackets
- Plug-in power supply
- One IR remote control per room

OPTIONS (SUBJECT TO COSTS)

- Mount for rooms with suspended ceilings (up to 1,000 mm)
- Mount for rooms with framed or double floors
- Bracket to enable 2nd tilting axis (i.e. for mounting sagittal lasers at diagonally placed machines)
- Free-standing, floor mounted column (post) for isocenter height from 900 to 1400 mm (from 35.4 to 55.1 inch)
- Central power supply
- Wilke phantom

NOTES

- 12 months standard warranty
- Installation and commissioning not included



900-1400 mm
Variable Isocenter
Height

Free-standing column (post)
(available for APOLLO red, green & blue)



Laser Adjustment

All 6 degrees of freedom can be adjusted via remote control

- Shift, tilt, rotation
- Focus

TECHNICAL DATA



SYSTEM	
Dimensions (H × W × D)	221 × 110 × 100 mm (8.7 x 4.3 x 3.9 inch)
Weight	2.6 kg
International Protection Rating	IP20
Operating temperature	15 ... 30°C
Ambient conditions	35 ... 90 % rel. humidity, non-condensing
Swivel angle	45°
LASER	
Laser colour (typical wave length)	red (638 nm), green (520 nm), blue (450 nm)
Laser class	2
Focusable range	1 ... 4 m
Line length at 3 m distance	> 3 m
Line width up to 4 m distance	< 0.5 mm (blue), < 1 mm (red, green)
Max. laser output power	< 1 mW
POWER SUPPLY	
External power supply	100 ... 240 V AC, 50 ... 60 Hz
Internal voltage	24 V DC
REMOTE CONTROL	
Dimensions (H × W × D)	163 × 63 × 21 mm (6.4" x 2.5" x 0.8")
Weight	130 g
International Protection Rating	IP40
Power supply	6 V DC (4 batteries type AAA/LR 03/Micro, 1.5 V)

www.LAP-LASER.com

LAP GmbH
Laser Applikationen
 Zeppelinstrasse 23
 21337 Lueneburg
 Germany
 Phone +49 4131 9511-95
 Fax +49 4131 9511-96
 Email info@lap-laser.com

LAP APOLLO is a registered trademark of LAP GmbH Laser Applikationen. Further designations of products or services may be registered trademarks of LAP GmbH or other organizations; their use by third parties may infringe the rights of the respective owners.

